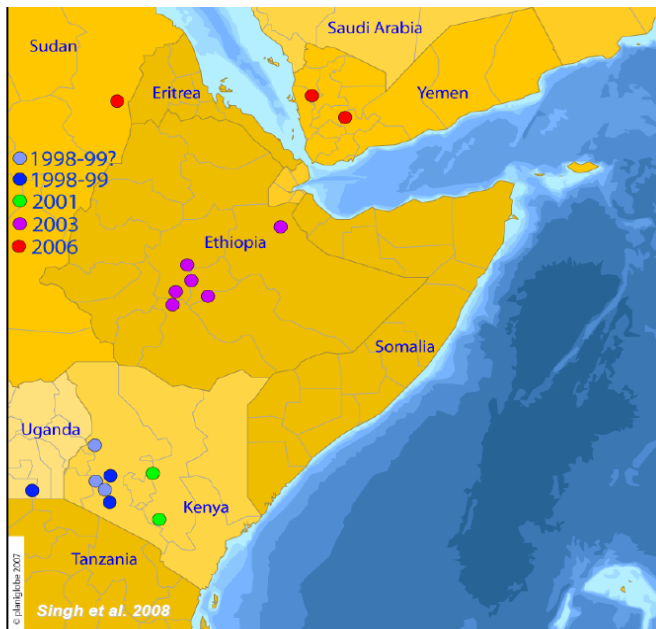


Spread of stem rust race Ug99

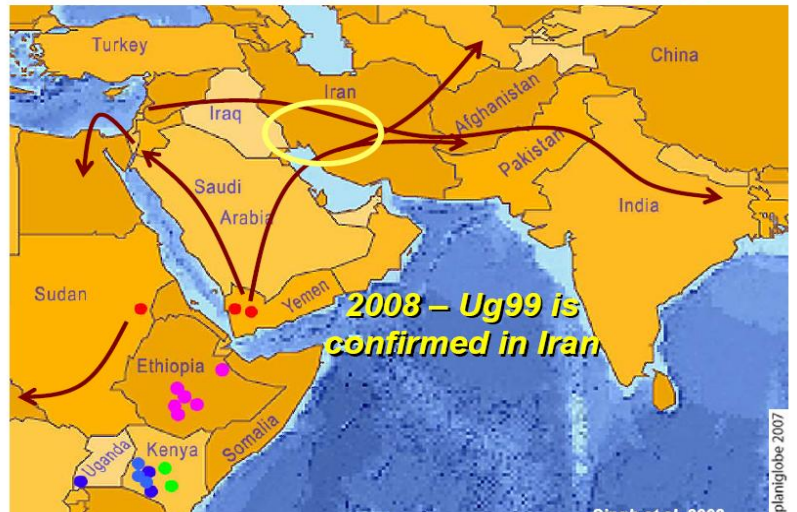
1998 – Uganda and Kenya

2003 - Ethiopia

2006 - Yemen and Sudan

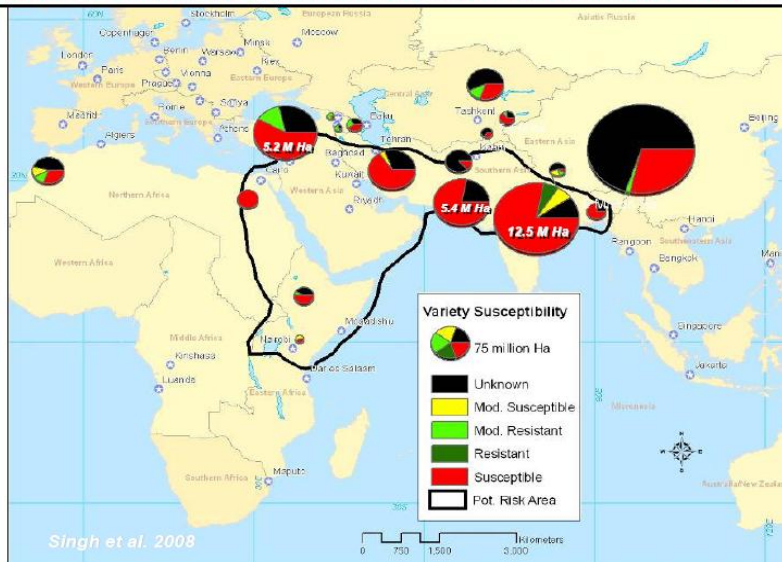


Potential Migration Routes of Ug99



Immediate Risk Areas – Initial Assessments by CIMMYT

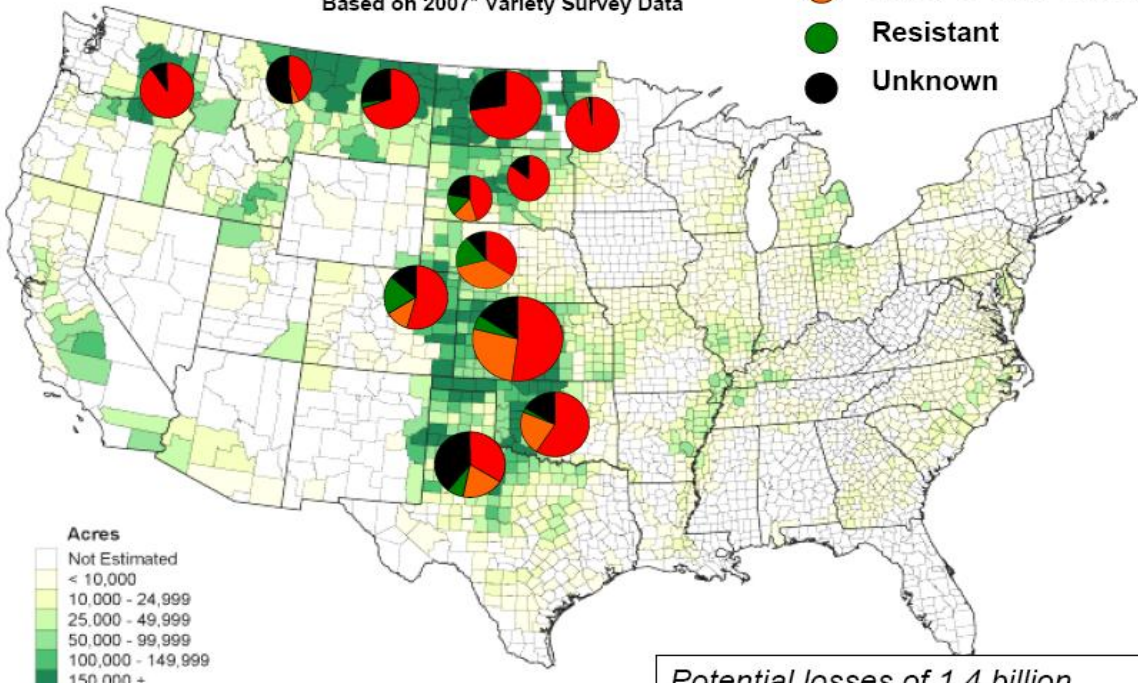
1 Billion People; 117 Million Tons or 19% of World Wheat Production



Vulnerability of Production to New Races of Wheat Stem Rust

Based on 2007* Variety Survey Data

- Susc. to Pgt-TTKS
- Susc. to Sr24 variant
- Resistant
- Unknown



* Note: Variety survey data are unavailable for the eastern soft red region; Last surveys for TX, SD were in 2005.

Potential losses of 1.4 billion bushels, valued at over \$10 billion

Reaction of Wheat Germplasm in 2007-08 USDA-ARS Regional Nurseries to Stem Rust

- Susc. to Pgt-TTKS
- Susc. to Sr24 variant
- Susc. to Sr36 variant
- Resistant

